

MARSURF I M 300



|  
- 0 +

**Mahr**

EXACTLY

## MarSurf. Handy and precise for on-site roughness measurements

### MOBILE ROUGHNESS MEASUREMENT DEVICE MARSURF M 300

- | Mahr has played a key role in ensuring the success of mobile roughness measurement devices. As early as the 1980s, Mahr was setting new standards with the M4P. The products have developed in line with changing production monitoring requirements. Today's devices meet the highest international standards. Mobile roughness measurement devices from Mahr are lightweight with a handy shape, flexible handling, high-precision measurement in different positions and easy positioning using V-blocks. | ◀



## MarSurf M 300

Highly mobile, high-performance unit



### Description

The operation of this instrument is based on the well-proven catalog of functions which enables instrument settings such as measuring conditions, language and record contents to be selected very easily, thus offering a maximum of comfort and flexibility.

The MarSurf M 300 not only meets the requirements for determination and documentation of selected parameters, but also makes most of the parameters and characteristic curves stipulated in DIN/ISO/JIS available for the evaluation of the profile assessed.

Moreover, the MarSurf M 300 offers an integrated memory for up to 40,000 results or 30 profiles, as well as the functions of tolerance monitoring, vertical scale selection and the setting of unsymmetric intersection lines for peak count calculation.

Delivery as a set.

MarSurf M 300-Set

**Order No. 6910401**

### Features

- Measuring range of up to 350  $\mu\text{m}$  (.014 in)
- Units  $\mu\text{m}/\mu\text{inch}$  selectable
- Standards: ISO/ASME/JIS and MOTIF selectable
- Traversing length as per DIN EN ISO 4288/ ASME B46.1: 1.75 mm, 5.6 mm, 17.5 mm (0.07 in, 0.22 in, 0.7 in) as per EN ISO 12085 (MOTIF): 1 mm, 2 mm, 4 mm, 8 mm, 12 mm, 16 mm
- Number of sampling lengths selectable from 1 to 5
- Automatic selection of filter and traversing length conforming to standards
- Phase-correct profile filter as per DIN EN ISO 11562
- Cutoff 0.25 mm, 0.80 mm, 2.50 mm (.010 in, .032 in, .100 in)
- Short cutoff selectable
- Parameters as per DIN/ISO/SEP: Ra, Rq, Rz, Rmax, Rp, Rt, R3z, Rk, Rvk, Rpk, Mr1, Mr2, Rmr, RSm, R<sub>Pc</sub> (see pg. 17 for additional parameters)
- Tolerance monitoring in display and measuring record
- Automatic or adjustable scaling
- Printing of R-profile (ISO/ASME/JIS), P-profile (MOTIF), material ratio curve, measuring record
- Output of date and/or time of the measurements
- Integrated memory for up to 40,000 results and 30 profiles
- Dynamic calibration function
- Locking and/or password protection for instrument settings

## MarSurf M 300 Novelties

Up to 4 m distance between evaluation unit and drive unit enable high flexibility for your to conduct your measurements. Especially with large, cumbersome parts, the application engineer can work directly at the measuring site. The measurement can be started at the evaluation unit MarSurf M 300 or at the drive unit MarSurf RD 18. The evaluation unit stand in a "safe place" and delivers exact results without influence from the ambient conditions.



## Brilliant, illuminated color display

A large, illuminated color display to read the parameters and the profiles so that you can:

- read the correct results in a poorly lit atmosphere

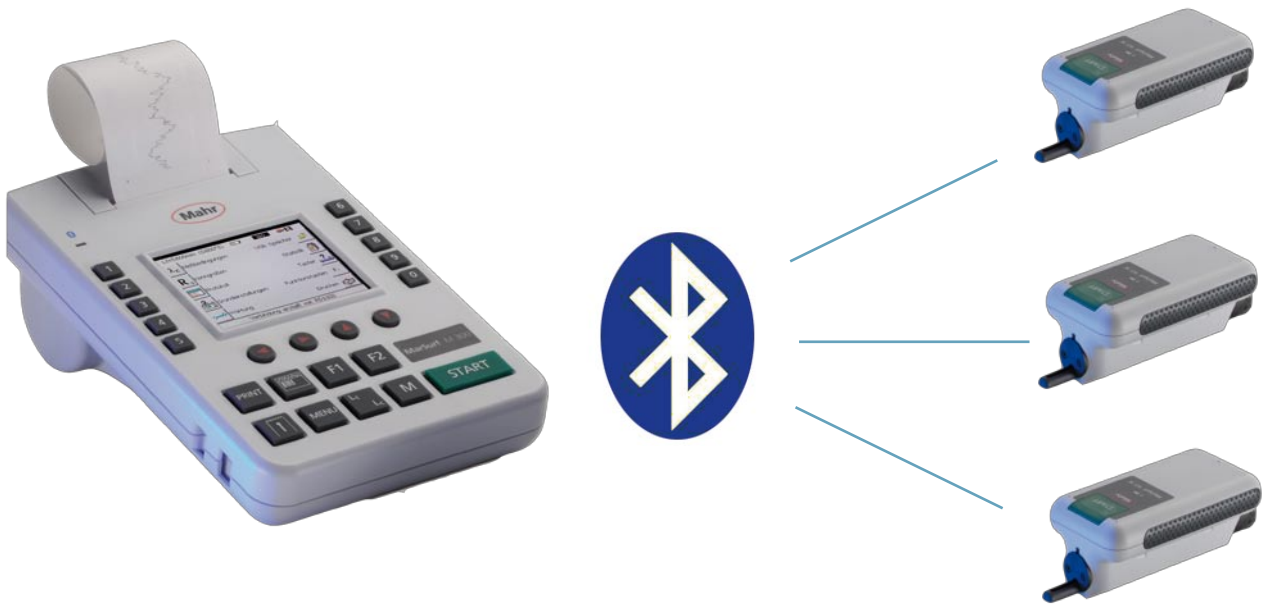




## Bluetooth Technology

**NEW:** cable-free connection between evaluation unit and drive unit!

A further advantage of the Bluetooth technology:  
Connection of several drive units to one evaluation unit. You can select your desired drive unit from a list.



## Software "MarSurf PS 1/M 300 Explorer" for mobile roughness devices

The essential functions of the **Software "MarSurf PS1/M 300 Explorer"** are to secure and document your measuring results and profiles.

The data stored in the **MarSurf M 300** can e.g. be printed out in any format.

The measuring data can be displayed in different forms:

- Profile and results
- Results
- Profile + MRK + results
- Statistics, and much more

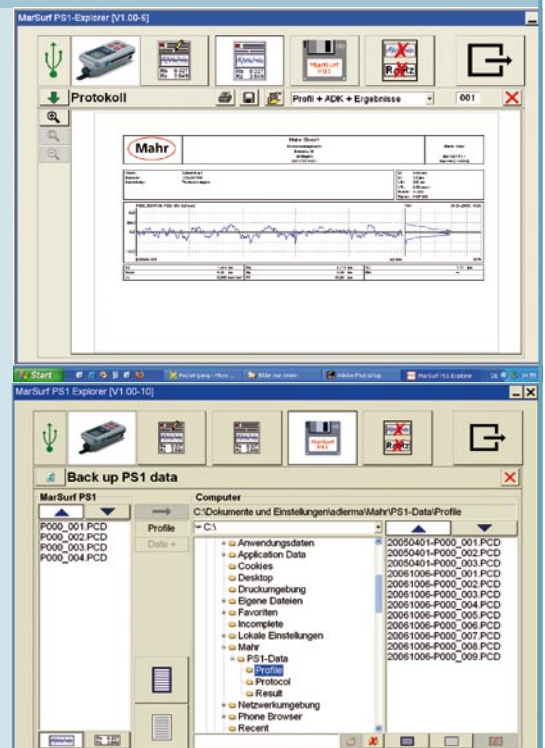
The **Software "MarSurf PS1/M 300 Explorer"** additionally simplifies the securing of data on your PC.

During installation, a MarSurf M 300 directory is automatically created.

The results and profiles saved in the M 300 can simply be moved to that directory or any directly of your choice using "Drag & Drop" and are therefore secured.

**Software "MarSurf PS1/M 300 Explorer"**  
to document results and record profile on a PC

**Order No. 6910205**



## Drive unit MarSurf RD 18



### Description

The drive unit RD18 can be connected to the MarSurf M 300 and is included in a carrying-case set. It can be connected either via Bluetooth or with a cable. The well-proven PHT-skid probes are implemented in the drive unit. To test the standard probe, a testing standard is already integrated in the RD 18 - this gives you the certainty that your results are correct!

To fasten individual accessory elements, 4 inside thread sockets are located on the underside of the RD 18. Furthermore, the prismatic underside offers you the possibility to perfectly position your work-pieces.

### Technical data

#### Drive unit RD 18

Tracing direction  
Traversing length adjustable on  
M 300 as per DIN/ISO  
as per EN ISO 12085

Traverse speed  
Dimensions  
(without probe protection)

#### Order No. 6910403

lengthwise  
1.75 mm, 5.6 mm, 17.5 mm  
(0.07 in, 0.22 in, 0.7 in)  
1 mm, 2 mm, 4 mm, 8 mm,  
12 mm, 16 mm  
0.5 mm/s  
Ø 24 mm, L = 112 mm

### MarSurf RD 18 with height adjustment



### underside of the MarSurf RD 18



## Application examples



### Upside down measurements

Perfect upside down measurements with the MarSurf RD 18. Place parts, start measurement, finished.

Enables the measurement of small workpieces without additional mounts.

No more alignment work necessary.

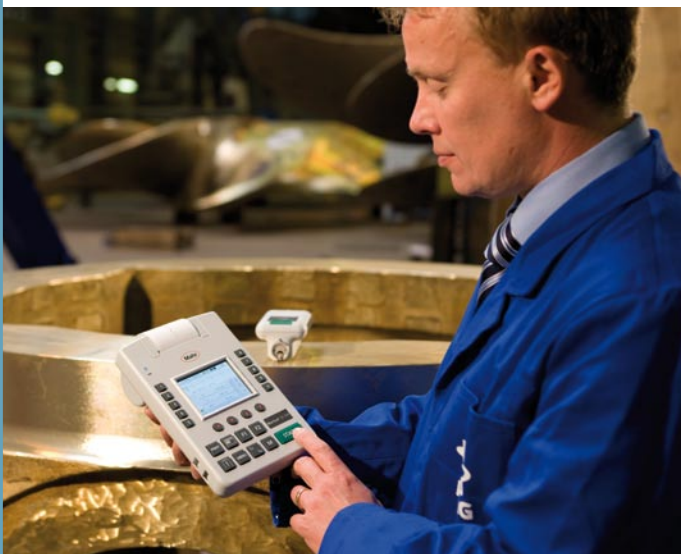
A solution for a fast and certain measurement.



### Measurement with end face vee-block

Flexibility due to extensive accessories that are already included in the standard scope of delivery.

The end face vee block offers the possibility to give the secure support for different applications.



### Measurement with and without cable

Especially when measuring large, cumbersome parts, it is not always possible for the measuring technician to be directly near the evaluation unit or, as shown in this example, the drive unit.

Bluetooth technology gives the advantage of cable-free connection.

An additional factor that simplifies surface measurement.

It is also possible to operate the MarSurf RD 18 under special conditions with a connection cable (without Bluetooth connection).

## Optional probes for MarSurf M 300

### Probes for various measuring tasks for use with RD 18

The P-probes are characterized by special construction features:

- Stylus tip geometry as per EN ISO 3274, standard 2 μm/90°
- Measuring force of approx. 0.7 mN (as per EN ISO 3274)
- Reliable inductive converter
- Robust, rigid housing
- Self-aligning, elastic bearings
- Reliable plug and socket connections

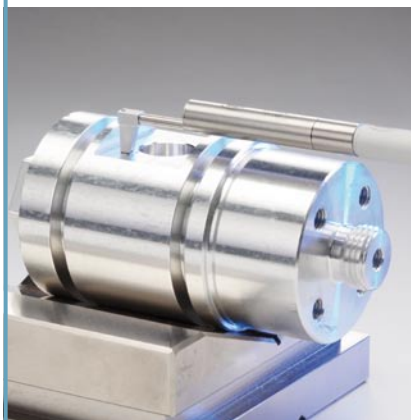
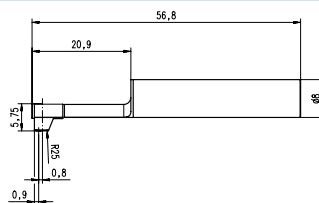


#### PHT 6-350 pick-up

Type  
Skid radius  
Contact point  
Measuring range  
Specification

#### Order No. 6111520 (standard probe)

single-skid pick-up with spherical skid  
25 mm (.984 in) in traversing direction,  
2.9 mm (.114 in) at right angles  
0.8 mm (.0315 in) in front of the stylus  
350 μm (0.014 in)  
for plane surfaces, bores with a dia. larger than 6 mm,  
(.236 in) and a max. depth of 17 mm (.669 in), grooves with  
a width larger than 3 mm (.118 in);  
min. workpiece length = traversing length + 1 mm (.0394 in)

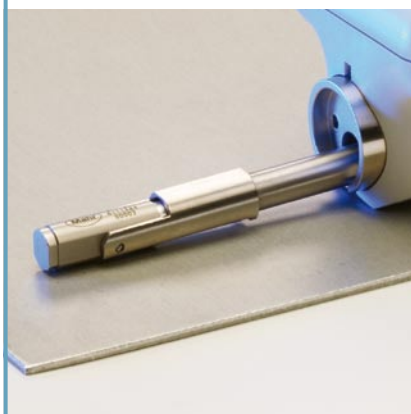
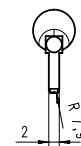
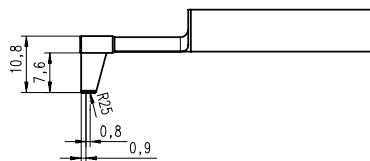


#### PHT 11-100 pick-up

System  
Type  
Skid radius  
Contact point  
Measuring range  
Specification

#### Order No. 6111524

NHT 6-150 pick-up Order No. 6111504  
single-skid pick-up with spherical skid  
25 mm (.984 in) in traversing direction,  
2.9 mm (.114 in) at right angles  
0.8 mm (.0315 in) in front of the stylus  
150 μm (.00591 in)  
for plane surfaces, bores with a dia. larger than  
11 mm (.433 in) and a max. depth of 14 mm (.551 in),  
grooves with a width larger than 2.5 mm (.098 in)

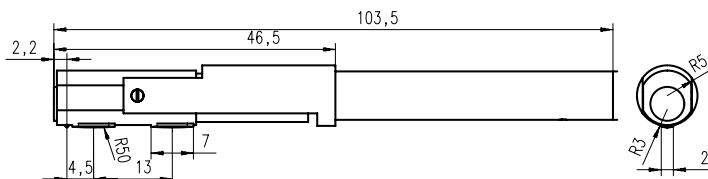


#### PT 150 pick-up

Type  
Skid radius  
Contact point  
Measuring range  
Specification

#### Order No. 6111523

dual-skid pick-up with spherical skid  
50 mm (1.969 in) in traversing direction,  
3 mm (.118 in) at right angles  
4.5 mm (.177 in) in front of the stylus  
150 μm (.006 in)  
Dual-skid pick-up for measurements on metal sheets and  
roller surfaces according to DIN EN 10049 (SEP).  
min. workpiece length = tracing length + 5 mm (.197 in)





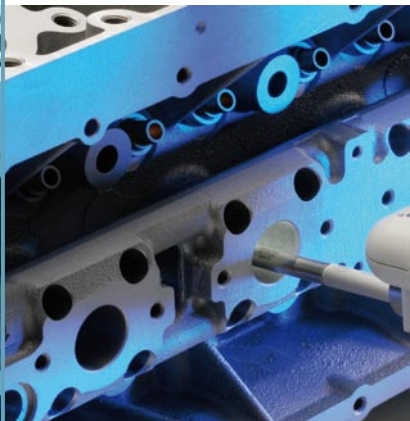
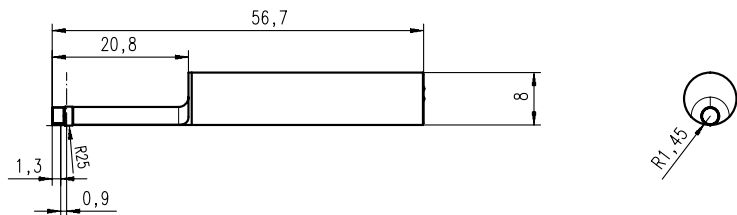
## Optional pick-ups for MarSurf M 300



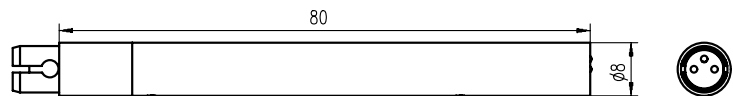
### PHT 3-100 pick-up

Order no. 6111521

Type	single-skid pick-up with spherical skid
Skid radius	25 mm (.984 in) in traversing direction, 1.45 mm (.0571 in) at right angles
Contact point	0.9 mm (.0354 in) in front of the stylus
Measuring range	350 $\mu\text{m}$ (0.014 in)
Specification	for bores with a dia. larger than 3 mm (.118 in) and a max. depth of 17 mm (.669 in);



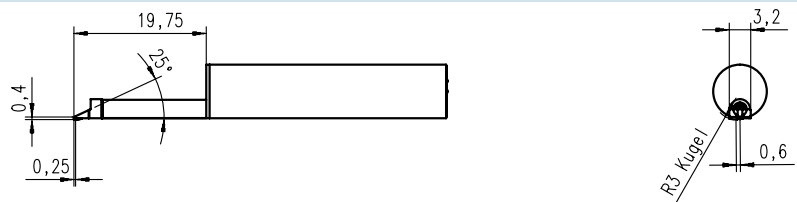
### Pick-up extension PHT (80 mm), Order no. 6850540 (for P-probes)



### PHTF 0.5-100 pick-up

Order no. 6111522

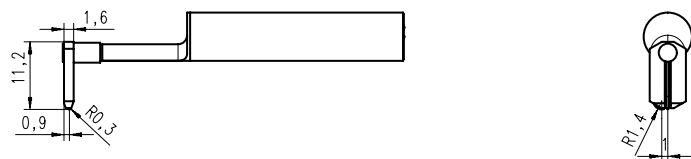
Type	single-skid pick-up with spherical skid
Skid radius	25 mm (.984 in) in traversing direction, 1.45 mm (.0571 in) at right angles
Contact point	0.6 mm (.0236 in) beside the stylus
Measuring range	100 $\mu\text{m}$ (.00394 in)
Specification	e.g. for gear tooth flanks with a modulus larger than 0.8



### PHTR-100 pick-up

Order no. 6111525

Single-skid pick-up with lateral, spherical skid, radius 0.3 mm (.012 in) in traversing direction, stylus radius 2  $\mu\text{m}$  (.0008 in), 90°  
For measurements on concave and convex surfaces.



## MarSurf M 300 + Measuring Stand



### Measuring Stands

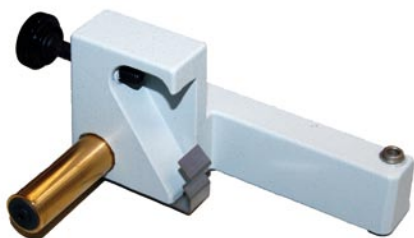
**Measuring stand ST-D (shown above) Order no. 6710803**  
 Height adjustment of RD 18 mounting device 0 mm to 300 mm by means of a handwheel  
 Dimensions (L x W x H) 175 mm x 190 mm x 385 mm  
 Weight approx. 3 kg

**Measuring stand ST-G (shown right) Order no. 6710807**  
 Granite plate with a 10 mm (.39 in) T-slot for mounting work-holding devices. Handwheel height adjustment for simply and exactly adjusting the drive unit to the required measuring height.  
 Height adjustment of RD 18 0 mm to 300 mm by means of a handwheel  
 Dimensions (L x H x H) in mm 500 mm x 300 mm x 415 mm  
 Weight approx. 35 kg

### Measuring Stand Accessories

**Measuring stand accessories** (not included in the delivery scope of the measuring stand):

**Mounting device MarSurf RD 18 Order no. 6910201**  
 The drive unit RD 18 can be swivelled and locked due to pivot movements of the mount ( $\pm 15^\circ$ ) (shown left).



## MarSurf M 300. Technical Data

	<b>MarSurf M 300</b>
Measuring principle	stylus method
Traversing speed	0.5 mm/s
Measuring ranges	350 µm (0.014 in)
Profile resolution	90 µm, 180 µm, 350 µm (automatic switching)
Filter	8 nm, 16 nm, 32 nm (automatic switching)
Cutoffs	Gauß-Filter, Ls-Filter
Short cutoff	0.25/0.8/2.5 mm
Traversing lengths as per DIN/ISO	(0.010/0.032/0.100 in)
As per EN ISO 12085 (MOTIF)	selectable
Evaluation lengths	1.75/5.6/17.5 mm
Number of sampling lengths	(0.07/0.22/0.70 in)
Standards	1/2/4/8/12/16 mm
Parameters	1.25/4/12.5 mm
	(0.05/0.16/0.5 in)
	selectable 1-5
	DIN/ISO/JIS/ASME
	DIN/ISO: Ra, Rq, Rz, Rmax, Rp, Rpk, Rk, Rvk, Rv
	Mr1, Mr2, A1, A2, Vo, Rt, R3z, R <sub>Pc</sub> , R <sub>mr</sub> , R <sub>Sm</sub> , R <sub>sk</sub>
	JIS: Ra, Rz, RzJIS, S
	ASME: Rp, R <sub>pm</sub>
	MOTIF: R, Ar, Rx, W, CR, CL, CF
Vertical scale	automatic/selectable
Horizontal scale	dep. on cutoff
Record contents	R-profile, MRK, R-profile, (MOTIF), results
Printing	automatic/manual record with time
Calibration function	dynamic
Memory	integrated memory for results of up to 40,000 measurements, 30 profiles
Units µm/µinch	selectable
Languages	selectable: English, German, French, Italian, Spanish, Portuguese, Dutch, Swedish, Czech, Polish, Russian, Japanese, Chinese, Korean, Turkish
Blocking for instrum. settings	yes
Password protection	yes
LCD	high resolution color display, 3.5", 320 x 240 pixel
Printer	thermal printer, 384 points/horizontal line, 20 characters/line
Printing speed	approx. 6 lines/second corresponds to approx. 25 mm/s (1 in/s)
Thermal paper	Ø 40.0 mm-1.0 mm, width 57.5 mm-0.5 mm, coated
Interface	USB, MarConnect
Power supply	NiMH battery, capacity: approx. 1,000 measurements (dep. on number and length of record printouts), plug-in power pack with three mains plugs, for input voltages from 90 V to 264 V
Power management	yes
Connections	drive unit, power pack, USB, MarConnect
System of protection	M 300 = IP 42, RD 18 = IP 40
Temperature range for	
– storage	-15 °C to +55 °C
– operation	+5 °C to +40 °C
Relative humidity	30 % to 85 %
Dimensions (L x W x H) M 300	190 mm x 140 mm x 75 mm
Dimensions (L x W x H) RD 18	130 mm x 70 mm x 50 mm
Weight M 300	approx. 1 kg
Weight RD 18	approx. 300 g

## MarSurf M 300 Set

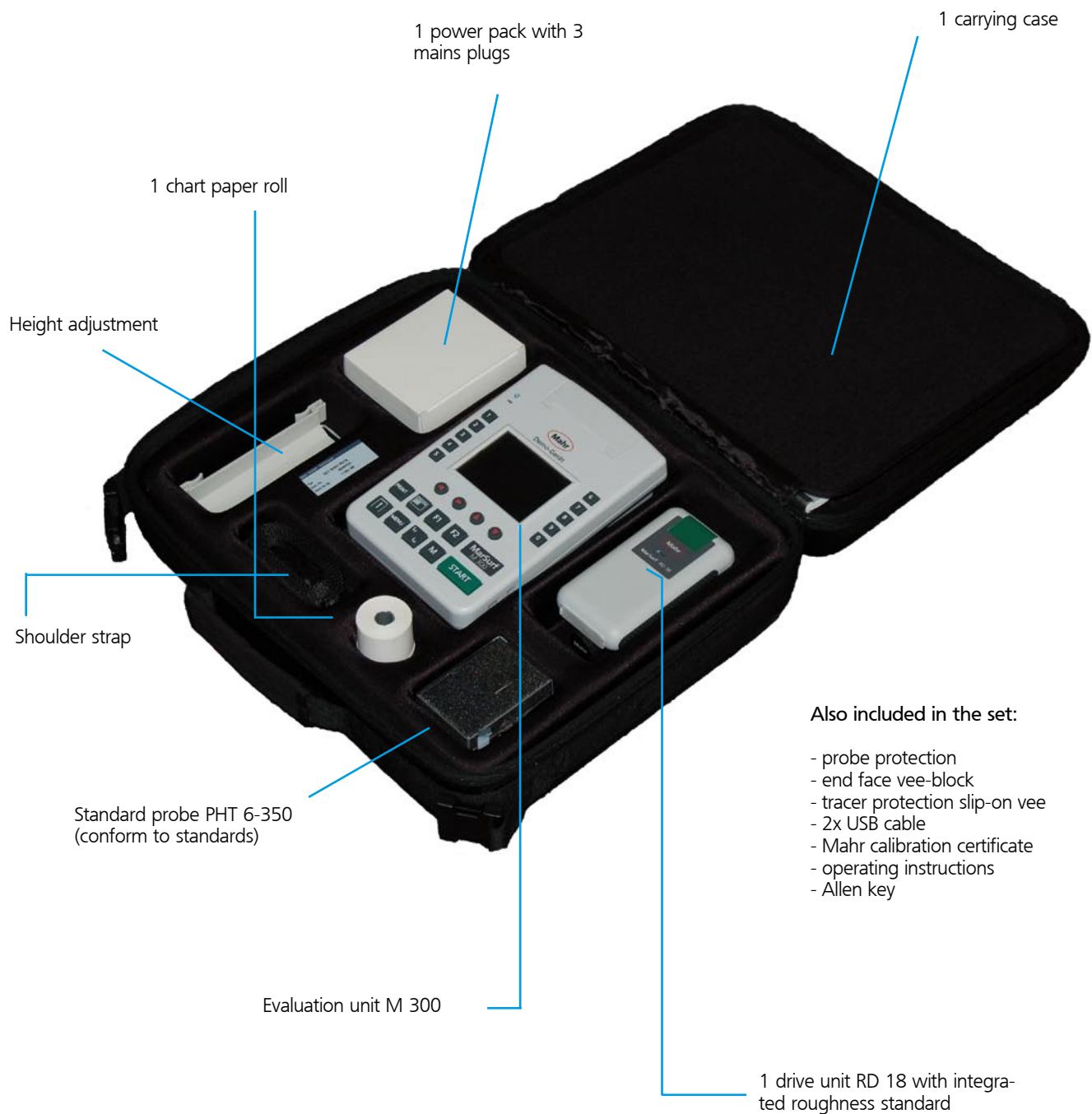
**MarSurf M 300 Set**

**Order no. 6910401**

The MarSurf M300 is delivered as a set in a handy carrying case. The instrument is thus safely packed for transport. The components included in the set can be quickly and easily assembled to form a complete measuring station.

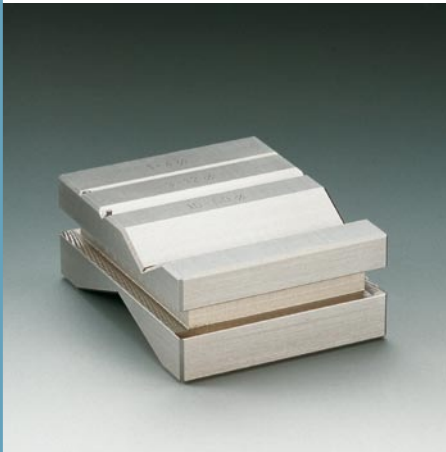
### Scope of delivery

The illustrated accessories form part of the MarSurf M 300 Set.





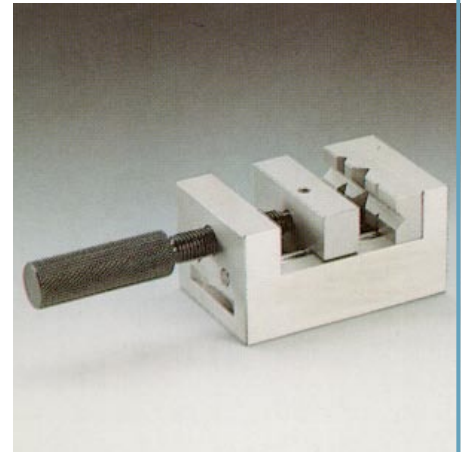
## Accessories



**PP vee-block Order No. 6710401**  
with four different prisms for mounting axis-symmetrical workpieces with diameters from 1 mm to 160 mm (.0394 in to 6.30 in). Dimensions (L x W x H) 100 mm x 80 mm x 40 mm (3.91 in x 3.15 in x 1.58 in). Weight 1.5 kg (3.31 lb). Including clamping springs for holding light workpieces in the prism.



**XY table CT 120 Order No. 6710529**  
for mounting and aligning workpieces. Can be adjusted in two coordinates by 15 mm (.591 in). Table surface 120 mm x 120 mm (4.728 in x 4.728 in) with two brackets.



**PPS parallel vice Order No. 6710604**  
for mounting rectangular and cylindrical workpieces. Jaw width 70 mm (2.76 in), jaw height 25 mm (.984 in), span 40 mm (1.58 in), total height 58 mm (2.28 in). Weight 2 kg (4.41 lb).



### PGN 3 geometric standard

Surface roughness standard with a sinusoidal groove profile. Profile depth approx. 3  $\mu\text{m}$  (120  $\mu\text{in}$ ), groove spacing approx. 0.12 mm (.00472 in). For checking the roughness measuring station.

**Mahr calibration certificate for PGN 3**  
**DKD calibration certificate for PGN 3**  
**Geometric standard PGN 1**  
**Geometric standard PGN 10**

**Order No. 9027715**  
**Order No. 6980102**  
**Order No. 6820602**  
**Order No. 6820605**



### PRN 10 roughness standard Order No. 6820420

with Mahr calibration certificate. Roughness standard with turned profil, chromed. Profile depth approx. 10  $\mu\text{m}$  (.394  $\mu\text{in}$ ). For checking the roughness measuring station.

WWW.MAHR.COM

|  
- 0 +



E X A C T L Y

**Mahr GmbH Göttingen**

P.O. Box 1853, 37008 Göttingen, Germany  
Carl-Mahr-Str. 1, D-37073 Göttingen  
Phone +49 (0)551-707 30, Fax +49 (0)551-710 21  
info@mahr.com / www.mahr.com

© by Mahr GmbH, Göttingen  
We reserve the right to make changes to our products, especially due to technical improvements and further developments. All illustrations and technical data are therefore without guarantee.